

# LAS VEGAS INTERAGENCY COMMUNICATIONS CENTER

## 2017 END OF YEAR REPORT

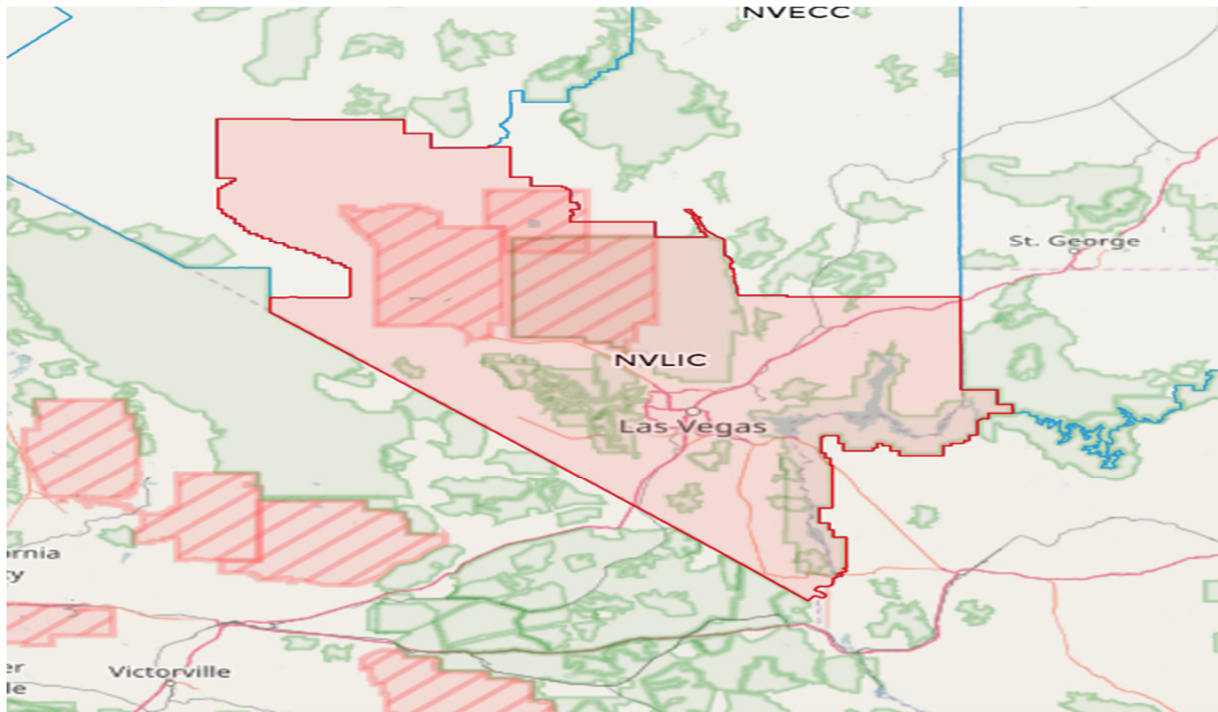


## TABLE OF CONTENTS

<i>AREA OF RESPONSIBILITY</i>	<i>1</i>
<i>DISPATCH PERSONNEL</i>	<i>2</i>
<i>LVICC ACCOMPLISHMENTS</i>	<i>3</i>
<i>LVICC 2017 FIRES CHART</i>	<i>4</i>
<i>LVICC INCIDENT TYPES</i>	<i>5</i>
<i>DAYS OF WEEK CHART</i>	<i>6</i>
<i>TIME OF DAY CHARTS</i>	<i>7</i>
<i>5 YEAR AVERAGES</i>	<i>8</i>
<i>CREW ACTIVITY</i>	<i>9</i>
<i>ROTOR WING OPERATIONS</i>	<i>10-11</i>
<i>FIXED WING OPERATIONS</i>	<i>12</i>
<i>LVICC REQUESTS</i>	<i>13</i>

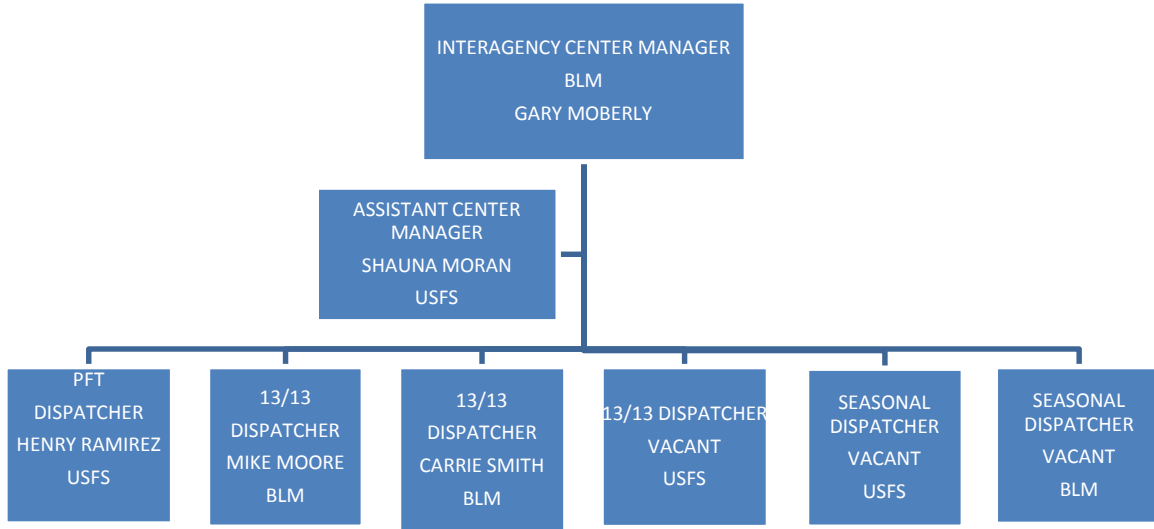
### AREA OF RESPONSIBILITY

The Las Vegas Interagency Communications Center continued its interagency success in providing a safe and cost effective service for wildland fires within the Southern Nevada portion of Nevada. LVICC is comprised of 4 Federal Agencies. The United States Forest Service (Spring Mountains National Recreation Area), Bureau of Land Management (Southern Nevada District Office), National Park Service (Lake Mead National Recreation Area, Tule Springs National monument), United States Fish and Wildlife Service (Desert National Refuge, Pahrangat National Wildlife Refuge, Ash Meadows National Wildlife Refuge, and Moapa Valley National Wildlife Refuge), all within Clark County and a portion of Nye County. The Center also maintains a relationship with the Clark County Fire Department and its Volunteer program, Nevada Division of Forestry, Mt. Charleston Fire Protection District, Department of Energy (Nevada Test and Training Range), Department of Defense (Nellis and Creech Air Force Bases), Bureau of Reclamation, Bureau of Indian Affairs, Nye County Emergency Services, and Pahrump Valley Volunteer Department by providing assistance when requested. Listed below is the total acreage responsibility of the Las Vegas Interagency Dispatch Center and each agency.



	<b>SMNRA</b>	<b>SNDO</b>	<b>LMNRA</b>	<b>USFWS</b>
OWNERSHIP ACRES	316,000	3,000,000	1,500,000	1,643,500
PROTECTION ACRES	316,000	3,427,562	1,500,000	1,643,500

## DISPATCH PERSONNEL



LVICC is normally operated with 7 to 8 personnel during the months of April-October: one center manager (BLM-PFT), one assistant center manager (USFS-PFT), two lead dispatchers (1 USFS-PFT, 1 BLM 13/13), two logistical dispatchers (BLM-13/13, USFS-13/13) and three seasonal dispatchers (1-BLM, 2-USFS). The center manager oversees and coordinates the operations, and fire leadership. The assistant center manager coordinates the day to day operations on the I.A floor.

There were some personnel changes made in 2017. Gary Moberly was hired by the BLM as the Interagency Center Manager. Carrie Smith vacated the USFS Seasonal Dispatch position and accepted the BLM 13/13 Logistics Dispatch position. The USFS 13/13 Dispatcher position was vacated in July. Mike Moore was hired by the BLM as the 13/13 Logistics Dispatcher in September.

LVICC was able to accommodate the staffing shortage by utilizing qualified Initial Attack Dispatchers that were available for a 14 day assignment. There were 9 single resources brought in to assist with daily dispatching duties. These IADP's proved to be a valuable asset to the center. There were 2 from Washington, 2 from Alaska, 1 from California, 2 from Utah, 1 from Colorado, and 1 from Wyoming.

The center began its 7-day coverage May 14, 2017 and changed its hours from 0800-1630, M-F, to 0800 to 1830, 7 days to adjust to the summer season. LVICC officially ended its 7-day coverage October 1, 2017.

The center was able to accommodate the overnight needs by utilizing local trained "militia" from the Forest Service, BLM and LVICC staff. The center did not have to utilize its Expanded Dispatch this season.

## **2017 LVICC ACCOMPLISHMENTS**

- LVICC requested, and supported the VLAT for the Potosi Fire in June.
- Supported Gold Butte and Basin National Monuments flights with DOI Secretary Zinke.
- Launched the LVICC website. (lvinteragency.org)
- Supported 9 IADP dispatch detailers from Alaska, Washington, Utah, Colorado, California, and Wyoming
- Filled two BLM 13/13 dispatcher and BLM center manager position.
- Assisted with numerous Prescribed Fires from the USFS, BLM, USFWS, and NPS.
- Introduced Nevada Division of Forestry Brush 5323, and NDF BC-53 Brett Waters to the center and established those resources into the WildCAD rotation for 2017.
- Supported the Southern Nevada Interagency Hand crew with their successful inaugural season.
- Completed the National Dispatch Readiness Review with minimal corrections for the center.
- Supported Single Engine Airtanker operations in Mesquite and Jean, and assisted with air resource sharing using the neighbor policy.
- Absorbed the Tule Springs National Monument into LVICC.
- 2 staff members were able to accept off district assignments.
- LVICC hosted a D-110 Expanded Dispatch course and ROSS Workshop. The center added 5 newly EDRC Trainees to the “Militia”
- Coordinated with USFS Radio Technicians with re-programming Forest Service radio frequencies.
- LVICC Dispatchers assisted with Interagency Fire Prevention and Recruitment programs.
- Implemented the NFDRS program into the center for 2017.



### LVICC 2017 FIRES

Las Vegas Interagency Communications Center has the primary responsibility of dispatching wildland firefighting resources for the entire Clark County area of Southern Nevada, a portion of Nye County, Nellis and Creech Air Force Base, and Department of Energy managed lands.

All of these responses are handled by the local interagency forces dispatched through the center using WildCAD. The majority were kept small and within the initial attack stage of suppression.

The majority of the fires were human caused. These statistics show the lightning caused also.

The first response for 2017 was a CCFD assist on 1/31/2017. The most challenging fire of the season was the Potosi Fire on the SMNRA. This lightning caused fire was started early in July and required a multi-agency response from the local forces and outside resources, aircraft, engines, smokejumpers, and crews to assist.

CY-2017 AGENCY FIRES BY CAUSE WITH ACRES								
AGENCY	HUMAN CAUSED	HUMAN ACRES	LIGHTNING CAUSED	LIGHTNING ACRES	FA/UTL	MISC./RX	TOTAL FIRES	TOTAL ACRES
BLM	46	2209.5	13	1.3	20	4	59	2210.82
HTF	4	1.5	8	418.0	0	5	12	419.40
LAP	10	4.1	4	1.3	0	7	14	5.40
FWS	4	0.4	0	0.0	0	2	4	0.40
ASSIST	15	68.9	2	0.2	0	0	17	69.10
DOD/NTS	0	0.0	1	10000.0	0	0	1	10000.00
TOTALS:	79	2284.4	28	10420.8	20	18	107	12705.12

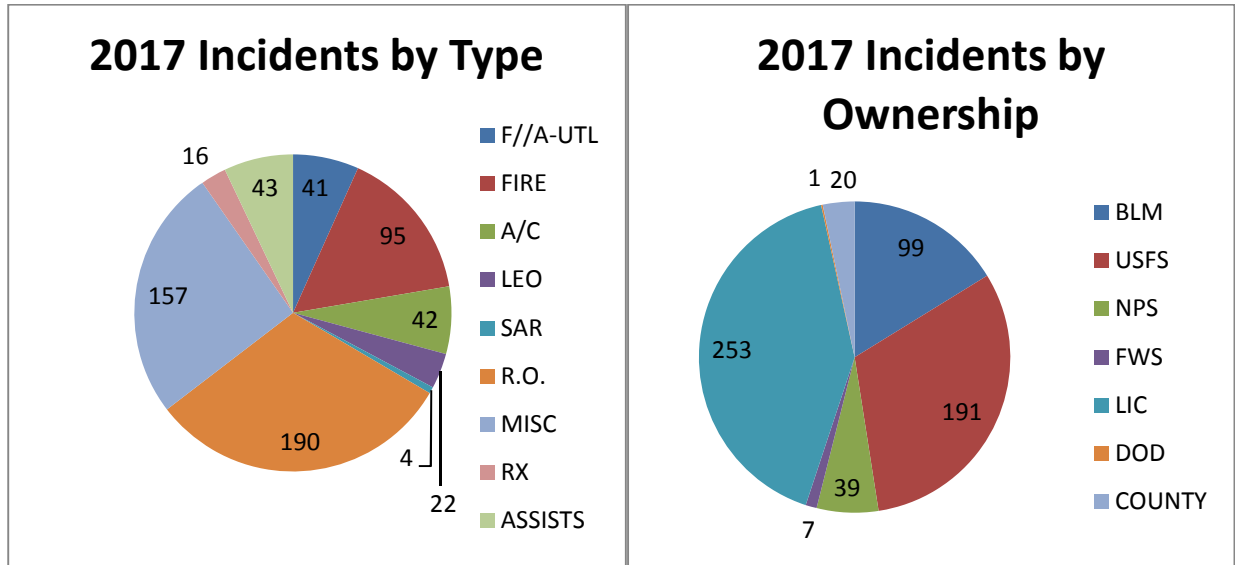
CY-2017 NUMBER OF FIRES, NUMBER OF FA, AND MISC. BY MONTH BY AGENCY														
MONTH	SND-H	SND-L	SND-ASST	SND-F/A	HTF-H	HTF-L	LAP-H	LAP-L	LAP-F/A	LAP-MISC	LAP-RX	FWS-H	FWS-L	DOD
JAN	0	0	1	0	0	0	0	0	0	0	1	0	0	0
FEB	1	0	0	1	0	0	0	0	0	0	0	0	0	0
MARCH	1	0	1	1	0	0	0	0	0	1	0	0	0	0
APRIL	0	0	1	0	0	0	0	0	0	0	0	0	0	0
MAY	10	0	4	0	0	0	3	0	0	2	2	0	0	0
JUNE	11	0	2	5	2	1	1	2	0	1	0	2	0	0
JULY	10	0	4	6	1	2	4	1	0	0	1	1	0	0
AUG	2	6	0	3	0	4	1	1	0	0	0	0	0	2
SEP	1	7	2	2	0	1	0	0	0	0	1	0	0	0
OCT	7	0	2	2	0	0	0	0	0	0	1	1	0	0
NOV	1	0	1	0	1	0	1	0	0	0	1	0	0	0
DEC	1	0	0	0	0	0	0	0	0	0	0	0	0	0
TOTALS:	45	13	18	20	4	8	10	4	0	4	7	4	0	2

### LVICC INCIDENTS BY TYPE

Las Vegas Interagency Communications Center manages a variety of incidents, and each is assigned a unique incident type and number.

Although the centers primary responsibility is wildland fire, its capabilities varies. There were a total of 586 recorded incidents that LVICC coordinated. LVICC is sometimes the first contact between the public, and field personnel. These information exchanges are documented using the WildCAD program. The records range from wildland fire reports, public and interagency assistance, smoke checks, resource orders for off unit assignments, aircraft monitoring, prescribed fire, Search and Rescue operations, abandon or illegal campfires, and Law Enforcement activities. (LEO activities for the Southern NV area are forwarded to Lake Mead Interagency Dispatch)

Locally, the dispatch workload was busier than normal for the year as LVICC was normally in a Preparedness Level of 2, at the same time, the GACC and National PL levels were operating at a Level 5.



\*F/A=False Alarm, A/C=Aircraft, LEO=Law Enforcement Officer, SAR=Search and Rescue, R.O=Resource Order, RX=Prescribed Fire, MISC=Miscellaneous (campfires, vehicle/motorist assists)

AGENCY WILDCAD INCIDENTS CY-2017							
	BLM	HTF	LAP	FWS	DOD	LIC	COUNTY
FIRE	57	14	14	3	1	0	6
AVIATION	0	2	1	0	0	39	0
RX	3	5	6	2	0	0	0
SAR	0	3	0	0	0	1	0
LEO	3	13	0	1	0	5	0
MISC.	2	124	4	0	0	24	3
F/A-UTL	22	10	8	1	0	0	0
ASSISTS	5	13	1	0	0	13	11
R.O.	7	7	5	0	0	171	0
TOTALS:	99	191	39	7	1	253	20

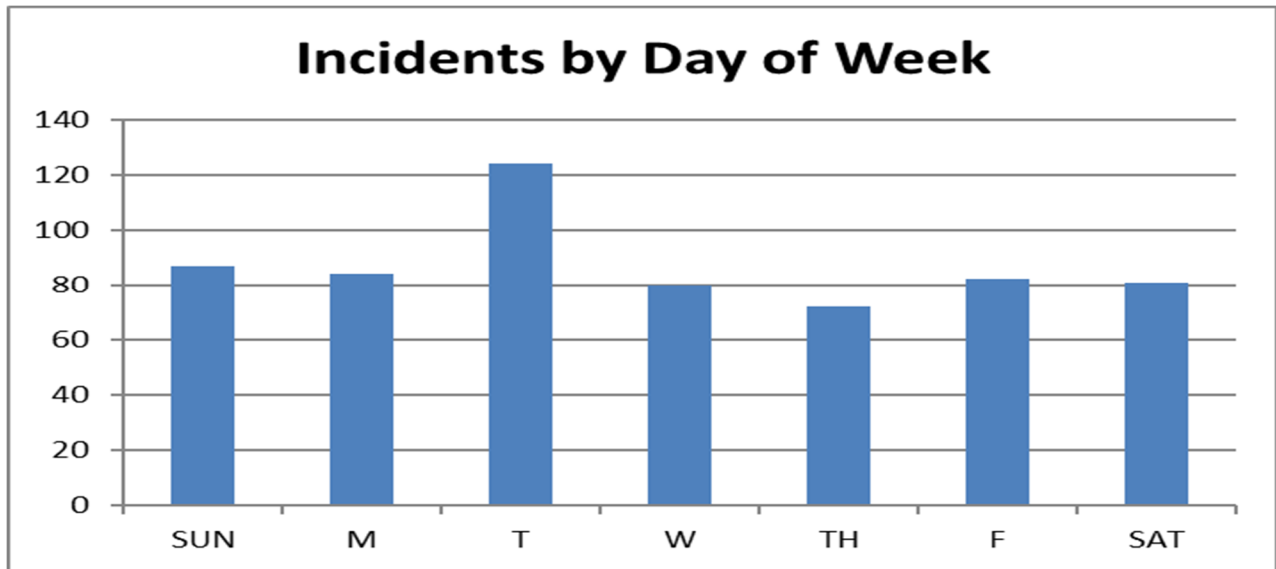
**FIRES AND INCIDENTS BY DAYS OF THE WEEK**

Las Vegas Interagency Communications Center does not staff 24 hours, unless there is a need to remain open. During the winter months, LVICC is staffed Monday-Friday, 0800-1630. During fire season, the center is staffed 7 days a week 0800-1830. There is also an on-call dispatcher assigned nightly to cover the demand for after-hours responses 365 days a year.

FIRES BY THE DAY OF THE WEEK							
	Sun	Mon	Tue	Wed	Thur	Fri	Sat
BLM	5	4	13	12	8	11	4
USFS	1	3	3	3	2	0	2
FWS	2	1	0	0	0	0	0
LAP	3	4	3	1	1	2	0
COUNTY	1	2	1	1	0	0	1
DOD	0	0	1	0	0	0	0
TOTAL:	12	14	21	17	11	13	7

*\*This chart shows the total number of FIRE DAYS in WildCad*

LVICC is primarily staffed for wildland fires. But with the growth of population in the Las Vegas metropolitan area and more people utilizing public lands there is a much higher demand for the center to be used.



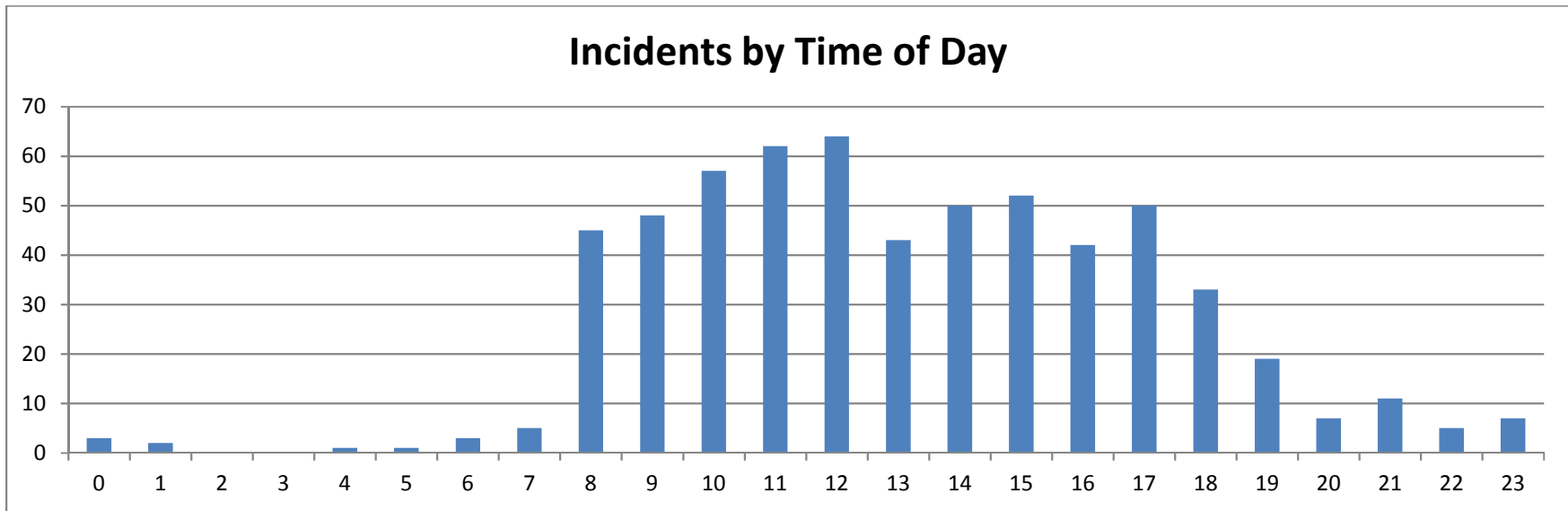
*\*This graph depicts the total number of days for ALL assigned WildCAD incidents.*



**LVICC TIME OF DAY FOR FIRES AND WILDCAD LOGS**

FIRES BY TIME OF DAY																								
	0:00	1:00	2:00	3:00	4:00	5:00	6:00	7:00	8:00	9:00	10:00	11:00	12:00	13:00	14:00	15:00	16:00	17:00	18:00	19:00	20:00	21:00	22:00	23:00
BLM	1	0	0	0	0	0	0	2	4	1	3	2	2	6	6	3	5	3	4	3	2	4	1	5
USFS	0	0	0	0	0	0	0	0	0	3	0	1	0	1	1	2	0	4	1	0	1	0	0	0
LAP	0	0	0	0	0	0	0	0	0	0	0	0	1	0	1	1	0	0	0	0	0	0	0	0
FWS	0	0	0	0	0	0	0	0	1	1	0	1	1	2	1	1	2	3	0	0	0	0	1	0
COUNTY	1	0	0	0	1	0	0	0	1	0	0	0	0	1	0	0	0	0	0	1	0	1	0	0
DOD	0	0	0	0	0	0	0	0	0	0	0	0	0	0	0	0	0	0	0	0	0	0	0	1
TOTAL:	2	0	0	0	1	0	0	2	6	5	3	4	4	10	9	7	7	10	5	4	3	5	2	6

\*Chart shows total FIRES only



\*Graph shows total INCIDENTS from WildCAD

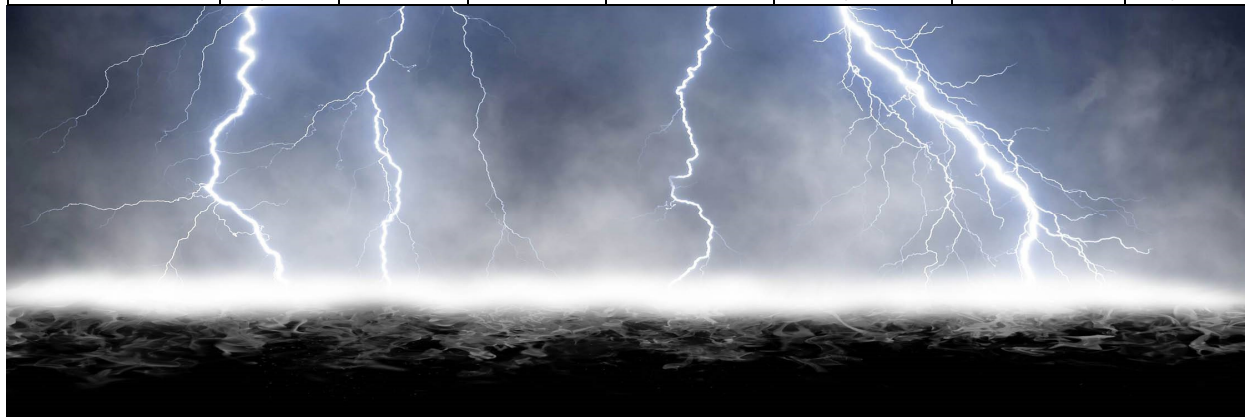
## LVICC 5 YEAR AVERAGES

### LVICC 5 YEAR FIRE INCIDENTS AVERAGES

YEAR	USFS	BLM	NPS	USFWS	DOD/NTS	ASSISTS	TOTAL
2013	24	117	15	6	5	21	188
2014	13	106	20	5	0	19	163
2015	24	68	12	7	0	20	152
2016	23	71	18	7	0	12	132
2017	11	79	14	4	2	15	117
<b>TOTAL</b>	95	441	74	29	6	77	752
<b>5-YR AVERAGE</b>	19	88	15	6	2	16	151

### LVICC 5 YEAR ACREAGE BURNED AVERAGES

YEAR	USFS	BLM	NPS	USFWS	DOD/NTS	ASSISTS	TOTAL
2013	26,978	889	626	2	206	10	28,711
2014	4	45	20	2	0	92	163
2015	13	20	8	1	0	35	77
2016	479	74	2	4	0	6	565
2017	419	2312	6	1	10008	27	12,765
<b>TOTALS</b>	27,893	3,340	662	9	10206	170	42,281
<b>5-YR AVERAGE</b>	5,579	668	133	2	2,043	34	8,456



**CREW ACTIVITY 2017**



Southern Nevada took this challenge and opportunity to show everyone what this program could look like and represent. The BLM embraced the intent of not only providing an opportunity for the individuals on the crew, but the future of the program. Continued support and funding are not simply the right thing to do for the individuals currently on the crew, but for countless others departing our armed forces and seeking the opportunity to continue to make a difference. The BLM Southern Nevada District Office (SNDO) fueled this spark and established the Vegas Valley Hand Crew. Learning to fight wildland fire is a skill that is new to most veterans, while learning how to function and operate as a team is a skill most everyone on this crew has experience with. The amount of time and dedication required to undertake this type of career should not be underestimated. As with many other jobs and trades, this line of work is not for everyone, but with all the knowledge and experience brought to bear, this crew has been set up to not only succeed but to flourish.

Type 2 Crews are an essential part to the Southern Nevada area fire organization. The 2017 season was slow for Initial Attack activity for the crews assigned to LVICC.

CREW NAME	FIRST DAY	LAST DAY	TRAINING DAYS	DAYS ASSEMBLED	MILES TRAVELED	FIRE DAYS	INJURIES	PROJECT DAYS	TASK BOOK COMPLETIONS
VVHC	5/1	9/29	18	153	61,000	90	3	4	8

*\*VVHC BASIC STATS*



The Southern Nevada Interagency Hand Crew was assembled this season through the interagency partnership. The BLM, USFS, USFWS, NPS, and NDF all supported this endeavor and its success. The crew was developed from Administratively Determined (AD) personnel along with federally, and qualified staff providing leadership for the crew. The crew was assembled according to NWCG Red Book Standards. The SNIHC was utilized on 5 different occasions. Their first

assignment was to a Regional Support detail to New Mexico. They finished that tour supporting Northern Nevada fires. The crew was assembled on 4 more occasions with assignments to Utah, Wyoming, Idaho, Arizona, and Nevada.

LVICC supported the crews by coordinating with sponsoring agency Fire Management Officers, and Training Officers to ensure AD personnel qualifications were accurate and updated on a regular basis. The center also maintained communication with Crew Supervisors and ensured their availability in ROSS. Dispatch also coordinated rental vehicles using the Great Basin Rental Vehicle Program during these assignments.

## **LVICC HELICOPTER OPERATIONS**



LVICC was responsible for dispatching the Las Vegas Helitack Crew. They are based out of The North Las Vegas Airport. The crew consists of 1 Helitack Crew Supervisor, Lucas Rhea, 2 Helitack Assistant Supervisors, Adam Johnson and Ian McQueary, 2 Helitack Squad Leaders, Jason Notz and John Kinder, 6 Helitack Crewmembers: Calum Murray, Jared Jake, Ray Davalos, Sadie Hynes, Julien Inclan, and Mike Popatia. There were numerous detailers who filled in throughout the course of the season including members from the Vegas Valley Handcrew, Team Rubicon, and the Interagency Partners from the Southern Nevada area.

2017 was the first season with a new vendor, Firehawk Helicopters, but familiar equipment, AS350B3e, made for a smoother transition. The crew traveled to assignments in

multiple locations, including: Battle Mountain, Winnemucca, Ely, Elko and Carson City Districts in Nevada, and the Umpqua National Forest in Oregon. The season in the Great Basin was very active this year, especially in Nevada and provided opportunities support the State through staffing an On-Call aircraft from July 10 to September 15.



In addition to individual qualification and training success Las Vegas Helitack came in 1<sup>st</sup> place in the National Helitack PT challenge, illustrating the dedication of all personnel to physical fitness and its importance to wildland firefighting.

Las Vegas Helitack had a successful season, using the experiences of a large number of returners and full complement of Career positions, the crew built a strong foundation, and will continue that tradition.

Some accomplishments for the 2017 season:

- Lucas Rhea assisted Elko district as UAM for 12 days in July and supported the Northwest Area as a member (ICT3t) on Nevada Team 4 in August.
- Ian McQueary assisted in the Southeast at the beginning of the season, provided leadership for the on-call helicopter throughout the summer and completed his TFLD Task Book.
- Adam Johnson also provided leadership to the on-call in addition to supporting Nevada Team 2 in the Northwest GACC as Air Operations.
- Jason Notz traveled to the Southeast in the beginning of the season and helped with staffing and qualifications on the on-call helicopter.
- John Kinder traveled to the Southeast as a HEQB in support of fires in GA, additionally he assisted with the on-call and with the local AD Hand Crew.
- Cal Murray assisted Big Cypress National Preserve during an active season in the Southeast and helped to staff the on-call helicopter.
- Jared Jake assisted with staffing on the on-call helicopter and participated in numerous EMT trainings.

The crew assisted with local fires and project work in the Southern Nevada area. They were in a higher demand throughout the Western United States and were able to assist other districts. The helicopter and crew was assigned to numerous Initial Attacks and supported many fires. They provided crew shuttles, cargo, long-line operations, mapping, and bucket work.

<i>NAME</i>	<i>START</i>	<i>END</i>	<i>INITIAL ATTACKS</i>	<i>FIRE HOURS</i>	<i>PROJECT HOURS</i>	<i>IN/EX #CARGO</i>	<i>#GALLONS</i>	<i>#PAX</i>	<i>TASK BOOKS</i>
4-BH	5/25	9/30	38	215	32.9	64,815	61,256	600	5

*\*BASIC STATS*

**FIXED WING OPERATIONS FOR LVICC**

LVICC had the responsibility of dispatching 2 Single Engine Air Tankers (SEAT) planes, T-828 and T-896. They were assigned to the Mesquite Airport, in Mesquite NV. The Mesquite SEAT base is hosted through Las Vegas Dispatch but shares resources throughout the Great Basin and surrounding areas. The SEAT Base Managers are supported through LVICC. Dave Winne and Bryan Bracken have been the usual managers with relief coming in as needed. The center can also utilize the Jean Airport, 30 miles south of Las Vegas when needed. Jean Seat Base is usually opened whenever there is an incident affecting the west side of the protection area, and can be used as a reload base to support our neighbors. The SEAT Bases are equipped with storage tanks that can be refilled within a 24 hour period, through LVICC.



The SEAT planes were proven to be an effective and quick air resource for the Great Basin fuel types. With fast turn around times due to retardant bases proximities. This resource can be coordinated with Initial Attack activities. They can be used to build a quick retardant line until personnel can access areas treated with retardant. These aircraft require limited supervision and work in tandem with ground personnel. These resources can

deliver retardant and water if in sensitive areas. The SEAT Planes are capable dropping upwards to 800 gallons per load. The center also dispatched various Air-Attack, and Lead Planes.

With the proximity to the Las Vegas Metropolitan area, The center has the ability to access a Call When Needed (CWN) aircraft whenever needed. LVICC also requested the Very Large Air Tanker (VLAT), and Type 1 Airtankers for the Potosi Fire with a Lead Plane. The center flight followed numerous aircraft ensuring their safe arrival to their destinations.

SEAT BASE	GALLONS	FLIGHTS
MESQUITE	26,975	39
JEAN	1300	3

### **LVICC REQUESTS**

Las Vegas Interagency Communications Center is the point of contact when there is any type of need or demand. The center utilizes the Resource Ordering Status System (ROSS) and is updated regularly. Dispatch ensures the resources are made available and unavailable when necessary. The resources can be made accessible to the local area only, the GACC, or the national level. The center also prepared travel and rental car arrangements for most outgoing overhead. The dispatchers can average up to 2 hours to process these travel requests. There were 66 airline reservations and 61 rental cars handled through LVICC.

AGENCY	AIRCRAFT	OVERHEAD	CREW	EQUIPMENT	SUPPLY
BLM	7	62	2	3	112
USFS	22	30	8	4	222
NPS	2	14	1	0	0
USFWS	0	0	0	0	0
COOPERATORS	2	7	1	0	17
GBCC	4	0	0	0	0
<b>TOTALS</b>	<b>37</b>	<b>113</b>	<b>12</b>	<b>7</b>	<b>351</b>

*\* REPRESENTS REQUESTS FOR LOCAL INCIDENTS*



AGENCY	AIRCRAFT	OVERHEAD	CREW	EQUIPMENT	SUPPLY
BLM	0	64	18	36	0
USFS	0	65	0	17	0
NPS	0	22	0	6	0
USFWS	0	7	0	2	0
COOPERATORS	0	10	0	10	0
GBCC	0	6	0	0	0
<b>TOTALS</b>	<b>50 (NV-LIC)</b>	<b>174</b>	<b>18</b>	<b>71</b>	<b>0</b>

*\* THIS CHART REPRESENTS ALL RESOURCES ASSIGNED OFF DISTRICT REQUESTS. ALL AIRCRAFT ARE DISPATCHED THROUGH LVICC. COOPERATORS INCLUDE NYE COUNTY, NLVFD, CCFD, NDF, AND NWS.*